



HONG KONG BAPTIST UNIVERSITY

Sustainable Development Goals

REPORT 2021

SUSTAINABLE DEVELOPMENT GOALS

Table of Content

Preface	1
SDG 01: <u>No Poverty</u>	2-3
SDG 02: <u>Zero Hunger</u>	4-5
SDG 03: <u>Good Health and Well-being</u>	6-7
SDG 04: <u>Quality Education</u>	8-9
SDG 05: <u>Gender Equality</u>	10-11
SDG 06: <u>Clean Water and Sanitation</u>	12-13
SDG 07: <u>Affordable and Clean Energy</u>	14-15
SDG 08: <u>Decent Work and Economic Growth</u>	16-17
SDG 09: <u>Industry, Innovation and Infrastructure</u>	18-19
SDG 10: <u>Reduced Inequalities</u>	20-21
SDG 11: <u>Sustainable Cities and Communities</u>	22-23
SDG 12: <u>Responsible Consumption and Production</u> ..	24-25
SDG 13: <u>Climate Action</u>	26-27
SDG 14: <u>Life Below Water</u>	28-29
SDG 15: <u>Life on Land</u>	30-31
SDG 16: <u>Peace, Justice and Strong Institutions</u>	32-33
SDG 17: <u>Partnerships for the Goals</u>	34-35



Preface

This report, which covers 2020/21, reflects the commitment of Hong Kong Baptist University to the United Nations Sustainable Development Goals. This year we have engaged our students to get a fresh perspective on the steps that our community are taking together to further us on our sustainability journey.

Sustainability has long been a consideration in everything we do at HKBU and many examples of how we contribute go by with little fanfare. This report offers us a chance to show a small portion of the contributions that we are most proud of, but there remains a lot of work to do. The year in review has been uniquely challenging and offers a stark reminder to all on why we must continue to move forward with the vital work set out by the United Nations. We hope the positive stories contained within this report will inspire and motivate all to take part.

Read on to learn more about our pioneering research and partnerships, education opportunities for our students as well as outreach activities and initiatives for the wider community.

Source of publications and bibliometrics is Scopus, 2017-2021. "Top journals" and "highly cited" refer to top 10% percentile of respective metrics.





End poverty in all its forms everywhere

Research

**Can Authoritarian Regimes Achieve Just Energy Transition?
Evidence from China’s Solar Photovoltaic Poverty
Alleviation Initiative**

Dr Kevin Lo, Assistant Professor of Department of Geography, examines China’s photovoltaic poverty alleviation initiative (PVPA), a policy that aims to ease poverty through a clean energy transition in rural areas. The evidence collected from interviews and surveys shows that a just energy transition has been achieved by the PVPA in two ways by assuming a path in which top-down politics, rather than bottom-up pressure, is the key driving force.

The study is published in *Energy Research & Social Science* in 2021, one of the leading journals in its field according to Scopus CiteScore. It is among the top 10% most cited publications worldwide.

More information can be found here: <https://doi.org/10.1016/j.erss.2021.102315>.

50
Publications

FWCI
1.14

Highly
cited
24%



Education

HKBU is committed to providing whole person education in a wide range of disciplines. General education (GE) courses that cover different social issues are provided to our students in order to achieve our vision and mission. In terms of deepening our students’ understanding of ending poverty in all its forms everywhere, the University provides several GE courses in relation to poverty in Hong Kong to students.

These are some of the courses:

- GCAP3076 Service-learning in Fighting Poverty
- GTSU2007 Fighting Poverty and Striving for a Sustainable Society
- GTSU2027 Tax: Answer for Wealth Inequality
- GTSU2046 Towards Evidence-based Solutions to Our Social Problems



End poverty in all its forms everywhere



Education is an effective channel to advocate upward social mobility in the hope of ending entrenched poverty. HKBU has been striving to make no social distinction in teaching and seeking ways to provide education opportunities, especially for the underprivileged.

Outreach

HKBUSU Sustainable Education Service Group

Echoing its motto “poverty alleviation through education, equipping ourselves through helping others”, HKBUSU Sustainable Education Service Group has offered a variety of volunteer teaching services in Gansu, China every summer. More than 3,000 students and teachers in Gansu have benefitted from our services for the last 10 years.

Outreach

Summer School: University Experience for Underprivileged Children

HKBU organised an experiential learning activity to let underprivileged children in Hong Kong spend their summer holidays meaningfully on HKBU campus. Through this event, we aimed to enhance students’ awareness and caring spirit towards the needy in society, boost their motivation to learn, and help the children to build up a positive attitude towards their life.





End hunger, achieve food security and improved nutrition and promote sustainable agriculture

Education

HKBU has set up the first and unique agriculture-related degree programme, namely Bachelor of Science (Honours) in Bioresource and Agricultural Science, in Hong Kong, focusing on the integration of agriculture with bio-resource management. Students gain hands-on experience in agricultural science and bioresource conservation to foster the understanding of the social, ecological, and environmental significance of agricultural practices and bio-resource conservation from the perspective of sustainability.



People are prone to suffer from various diseases and become less productive when facing undernourishment and hunger. This is why zero hunger is so crucial to human well-being at all times. HKBU also provides courses related to food security, agriculture, and plant and animal ecology to our students to enhance their understanding of zero hunger.



Event

Behind the War - Untold Stories of Humanitarian Aid

HKBU invited World Vision Hong Kong to explain the seriousness of the hunger crisis in Africa to students. The speaker shared with students hidden and thought-provoking refugee stories that led them to reflect on the problem of unstable supply of food and water. The seminar, aiming to cultivate students' sense of empathy, was very well-received with positive feedback.





End hunger, achieve food security and improved nutrition and promote sustainable agriculture

Education

As the common saying goes, "actions speak louder than words". HKBU encourages our staff and students to apply academic knowledge to address community needs and foster social changes. For instance, the Department of Chemistry offered CHEM4085 Food Analysis, a service-learning course, in which students were taught to analyse major components and harmful substances in food.

Students did not only learn about theoretical knowledge, but also applied their microbial analytical skills to assist Foodlink Foundation to conduct laboratory tests and redistribute surplus food from local caterers to marginalised groups. Linking up theories and reality, students realised that small acts could help people suffering from hunger and malnutrition.



Research

Understanding Roles of NAD-capped RNAs in Regulating Virulence of the Plant Pathogen Pseudomonas Syringae

Professor Yiji Xia of Department of Biology was awarded a General Research Fund of HK\$1.39M by the Research Grants Council. The project aims to understand the role of NAD capping and decapping in regulating genes and pathways involved in the virulence and fitness of *P. syringae* through the use of genomic, genetic, and molecular technologies. The knowledge gained from this study will both add to the understanding of pathogenesis of other plant and human pathogens and aid disease control strategies in crop production.

Do you know??

1,310 loaves of bread had been collected and rescued in this course. However, in Hong Kong, there are still **3,500** tonnes of food waste sent to landfills every day. You can also fight against food wasting with a small act!





Ensure healthy lives and promote well-being for all at all ages

Education

HKBU is the first UGC-funded institution to offer undergraduate education in Chinese medicine and pharmacy in Hong Kong. The School of Chinese Medicine (SCM) is dedicated to providing quality academic programmes, conducting pioneering research and technology development, and offering top-notch Chinese medicine healthcare services to all.

Two programmes offered by SCM:

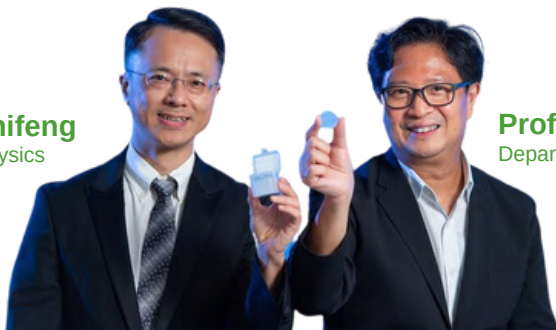
- Bachelor of Chinese Medicine and Bachelor of Science (Honours) in Biomedical Science
- Bachelor of Pharmacy (Honours) in Chinese Medicine

Research

Pioneering Invention for Parkinson's Disease Treatment

Researchers from HKBU have invented a nanostructure that could stimulate neural stem cells to differentiate into nerve cells, offering help in treating Parkinson's disease. They found that the transplantation of these nerve cells into rats with Parkinson's disease progressively alleviated their symptoms, with the new cells replacing damaged nerve cells around the transplantation site.

Dr Huang Zhifeng
Department of Physics



Professor Ken Yung
Department of Biology

Research

New Discovery on Fullness Regulatory Mechanism and Drug Target for Obesity



Dr Xavier Wong
School of Chinese Medicine

Professor Bian Zhaoxiang
School of Chinese Medicine
Associate Vice-President
(Chinese Medicine Development)

A research team led by Professor Bian Zhaoxiang and Dr Xavier Wong have discovered a proteolytic enzyme called membrane-type 1 matrix metalloproteinase (MT1-MMP) which had a key role in the regulatory mechanism that underpinned satiety. The depletion of MT1-MMP could reduce the chance of obesity induced by a high-fat diet. MT1-MMP could serve as a promising potential therapeutic target for the management of obesity.



The research findings have provided preliminary indications that the proteolytic enzyme is a promising target for the treatment of obesity.

Dr Xavier Wong





Ensure healthy lives and promote well-being for all at all ages

Outreach

SCM Contributed to Fight against COVID-19



In response to the COVID-19 pandemic, HKBU set up an interdisciplinary team of experts and staff to cater for the growing demand for medical help in the community. "Free Online Consultation Service for COVID-19 Patients" was launched to offer professional help to those who were in need.

Facility

HKBU Self-Care Corner

HKBU cares about students' mental wellness. The Self-Care Corner set up by the Learning Commons provides students with a cosy environment to relieve stress.

Self-Care Corner is not just a place for resting. The Learning Commons also organises relaxation workshops for students to soothe their mind and body, including harmonious pastel painting, Zentangle drawing, as well as other arts and crafts workshops.



Users of Self-Care Corner >2500

FWCI 1.68

981 Publications

In top journals 41%

Outreach

SCM Offered Specialised Care for Senior Residents of Care Homes

Due to the serious COVID-19 outbreaks faced by elderly care homes in Hong Kong, SCM launched a special scheme in collaboration with the Hong Kong Association of Gerontology. Together they offered remote Chinese medicine consultations and medicine delivery services to residents and staff members.

Additionally, SCM dispatched a team comprising 11 Chinese medicine practitioners to treat elderly COVID-19 patients with mild symptoms in the Kai Tak Holding Centre managed by the Social Welfare Department. The team provided Chinese medicine-based treatment, as well as medical prescription services to the elders.





Ensure inclusive and equitable quality education and promote lifelong learning opportunities for all

Research

Does Executive Function Training Modulate the Effectiveness of Self-determination Intervention and Postschool Outcomes for Adolescents with Intellectual Disability? An Experimental Intervention Study

Dr Ann Lui examines whether intellectual disability (ID) poses a limit on the development of self-determination, and proposes that executive functions contribute to a person's capacity to become self-determined. The development of evidence-based intervention may lead to higher levels of independence and quality of life among individuals with ID in adulthood, which will also benefit their caregivers and families.

Dr Ann Lui is an Associate Professor in Department of Education Studies. The project is supported by the Research Grants Council via a General Research Fund of HK\$0.75M.

In top journals
28%

118
Publications

FWCI
1.59

Outreach

Cantonese Classes and Cantonese Peer Tutoring Programme for Putonghua-speaking Students

HKBU had offered three types of Cantonese learning programmes to help mainland students overcome linguistic barriers in their studies and daily lives. Through these programmes, mainland students learned Cantonese and made friends with their peer tutors to enjoy a fruitful university life.



Event

General Education (GE) Sharing Series Session: Challenges and Rewards of Learning Across Disciplines: Insights from Teachers and Students



HKBU aimed to optimise our education quality in order to provide meaningful time during lessons to our students. From time to time, the General Education Office invited both teachers and students to share their thoughts on GE courses and reflect on their teaching and learning effectiveness. Teachers discussed pedagogical ways for simulating students' enthusiasm in new academic topics, while students shared their expectations and obstacles when pursuing GE courses.



Ensure inclusive and equitable quality education and promote lifelong learning opportunities for all

Academic in Spotlight

Meet Dr Moorhouse | HyFlex Teaching and Learning during the Pandemic

COVID-19 had caused significant changes in the higher education sector. Online software had been recognised as a mitigation to protect students and teachers from infection and to fulfil their needs in learning; nevertheless, the effectiveness of online teaching and learning had been questioned around the world. To identify what kind of functions could help users to overcome their communication challenges, Dr Moorhouse had been participating in research investigating "HyFlex" - hybrid and flexible teaching and learning. After a 6-week investigation, video-conferencing software and other digital tools were deemed critical to HyFlex's performance.

Know more about Dr Moorhouse:



Dr Moorhouse's research focuses on the experiences, beliefs, and professional learning of pre-service and in-service teachers, with a specific focus on English language teachers.



He is also working on a University Grants Committee's funded Early Career Scheme project which identifies the context and subject specific professional digital competencies beginning English language teachers need to ensure readiness for the teaching profession.



Dr Benjamin Luke Moorhouse
Department of Education Studies

Dr Moorhouse shared his thoughts on quality education:

What are the purposes of education?

- To prepare students for the society and the world they currently live in.
- To enable students to critique the society and the world they currently live in and imagine a preferred reality.

What are the qualities of good primary school teachers?

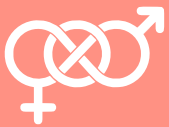
- Compassionate
- Understand diversity and difference
- Think on their feet
- Reflective
- Life-long learners

What do you think about the impact of COVID-19 on education?

- Impact:**
- Reduced sense of community
 - Smaller social network
 - Missed work, study, and relationship opportunities
- Benefits:**
- Autonomy to teachers
 - Adapting teaching and assessment practices to better meet the needs of students
 - Use of technologies as new ways to interact and engage with students



Achieve gender equality and empower all women and girls



Education

HKBU's mission is to conduct robust interdisciplinary research to produce academic and policy research that fosters social conscience and creates social transformation. The Gender Studies Concentration is co-offered by the Faculty of Arts and the Faculty of Social Sciences. It is also the first Gender Studies Concentration in Hong Kong. It delivers unique opportunities for students to research on gender issues, analyse the social and cultural construction of gender in our own and other contexts from a variety of disciplinary perspectives, and explain gender biases in society, knowledge, media, social justice, and everyday life.

Research

Gendering and Intersectionality of Social Capital: Community Development in Beijing and Hong Kong

Professor Shirley Hung led this project which was awarded by the Research Grants Council with a HK\$1.43M General Research Fund. The project aims to extend intersectional consideration to the types and characteristics of social capital in deprived communities in Beijing and Hong Kong. It uses theories of gender and intersectionality in understanding social capital will highlight the variation in social, political, economic and cultural contexts that shape how social capital works in and through inequality in gender relations. Findings from this study will contribute to widening theories of intersectionality to be more inclusive of Chinese experiences and perspectives. By examining current practices of community service provision in both locations, it also identifies potentials for social workers to further enhance social capital in these communities.



Academic in Spotlight

Professor Hung is the Department Head of the Department of Social Work at HKBU. She has been working on research focused on Women and Families, Gender-based Violence, Advanced Group and Community Work Practice, and Narrative Therapy. As a fellow of the Association Concerning Sexual Violence Against Women (ACSVAW) and RainLily, a Sexual Violence Crisis Centre, she made contributions to the counselling profession, particularly with the use of narrative therapy, for women in need, such as teenage mothers, sexual violence victims and divorced women. She has made significant contributions to promoting gender equality and helping empower women and girls.



Professor Shirley Hung
Department of Social Work



Achieve gender equality and empower all women and girls

Education

Students from one of our service learning courses, SOCI3056 Community Engagement for Social Sustainability, collaborated with Anti480, an organisation tackling sexual violence in Hong Kong, to look further into the topic of image-based sexual violence against male victims. Male victims had long been neglected due to the stereotype of gender roles to portray males as strong and tough in society. Therefore, students intended to arouse the public's awareness of male victims suffering from sexual violence through social media platforms.



49 Publications

In top journals 24%

Output cited 73%



Event

High Heel Running

Students from one of our gender studies concentration courses, HUMN2025 Gender: Theory and Culture, organised a High Heel Running competition. The event aimed to break the traditional image of gender and the concept of regarding high heels as feminine. Students of all genders participated in the racing in the hope of winning the title of "High Heel Master".

Outreach

Gender and Sexuality Festival

The Gender and Sexuality Festival is an annual event organised by HKBU students. The Festival has been held for 8 consecutive years, among which one of the themes - "Unapologetic Bodies" - enabled students to obtain knowledge about their bodies and the fun of sex under professional guidance.





Ensure availability and sustainable management of water and sanitation for all

Education

The topic of water sustainability, including drinking water, sanitation, and hygiene, is closely tied to our everyday lives. Various courses are provided to students at HKBU to enhance their understanding of clean water and sanitation. Some of these courses are:

- BIOL3015 Ecology Laboratory
- CHEM4006 Environmental Chemistry and Pollution Control
- CHEM4017 Environmental Analysis
- GCST2016 Sustainable China: Environment and Development Issues

Do you know??

Water is essential for life. HKBU ensures quality freshwater is accessible to every student and staff within our campus. We have set up **16** water dispensers on campus to cultivate sustainable culture and encourage students to minimise single-use plastic bottle waste.




Event

Green Quest - Field Training at Mai Po Nature Reserve

As wetland has been identified as the world's largest source of drinking water, either directly or indirectly, studying the ecosystem of a wetland is thus beneficial to understanding sanitation. Under the guidance of WWF-HK, our students visited the Mai Po Nature Reserve and studied the importance of wetland in maintaining biodiversity to promote sustainable development.





 Ensure availability and sustainable management of water and sanitation for all

Research

More Drinkable Water, More Food? Why Not Both?

As a range of experts over the world are looking for water-saving irrigation regimes, researchers at HKBU are also eager to tackle this significant problem. While rice production has been scaled up to meet the demand of the rising population, the problem of water shortage has been worsening. Professor Zhang and his colleagues tried to address the water-use efficiency (WUE) by applying one of the suggested technologies, alternative wetting and drying (AWD). Applying moderate AWD can increase both grain yield and WUE, and this research helps seek possibilities of increasing WUE to ensure water availability and sustainable management of freshwater.

Research

Influence of Livestock Activities on Residue Antibiotic Levels of Rivers in Hong Kong

In light of the widespread use of antibiotics in livestock farms, the presence of antibiotics in sewage and even coastal waterways has been recorded worldwide. As a university that cares about our society, HKBU and our researchers also conducted research to investigate the antibiotic levels of Hong Kong rivers. A research team led by Professor Kelvin Leung obtained data on antibiotic occurrence in selected Hong Kong rivers to assess the overall health of the inland rivers.



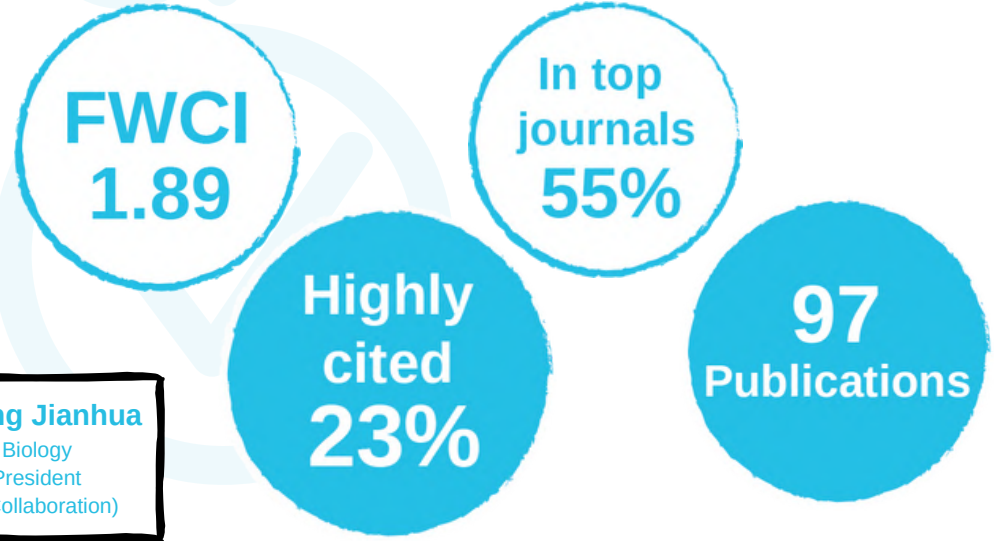
Professor Kelvin Leung
Department of Chemistry

Academic in Spotlight

Professor Zhang is the Associate Vice-President (Global Research Collaboration) and Chair Professor of Plant Biology at HKBU. Starting from January 2020 to June 2022, he had been leading a General Research Fund project of breaking the barriers of grain filling using novel mutant resources. Moreover, Professor Zhang is an expert in plant stress physiology and water-saving cultivation of field crops. In December 2008, he was chosen as "Five crop researchers who could change the world" by the prestigious scientific journal *Nature* for his research on water-saving irrigation in China. Professor Zhang was also given the State Council of China's State Natural Science Award and the State Scientific and Technological Progress Award.



Professor Zhang Jianhua
Department of Biology
Associate Vice President
(Global Research Collaboration)





Ensure access to affordable, reliable, sustainable and modern energy for all

Education

Department Highlight

Energy is inextricably linked to the development and sustainability of cities. HKBU is committed to increasing our students' awareness of renewable energy. The Department of Physics offers courses on green energy science that involve applications of scientific principles and technology. Students can gain hands-on experience through in-class learning, internships and overseas exchange programmes.



Course Highlight

PHYS2026 Renewable Energy Sources and Technologies II, which is also a service-learning course, investigates current practices and upcoming technologies in energy storage, distribution, and efficient energy utilisation. Students are required to create their teaching resources on renewable energy for students with special needs. The service projects are in collaboration with The Boys' and Girls' Clubs Association of Hong Kong and Hong Chi Morninghope School.

Facility

The Asian Energy Studies Centre (AESC)



The AESC, previously the Hong Kong Energy Studies Centre established in 1998, seeks excellence in academic research in sustainable green energy, with a special emphasis on governance in the Asian environment. The AESC aspires to become a globally recognised research hub for sustainable energy in the Asian region.

Event

T · PARK - A Green Journey of "Waste-to-Energy" and "Transformation"

HKBU students had the opportunity to visit the T · PARK, the first facility to turn waste into energy in Hong Kong. The Park embodies the idea of embracing "turning waste to energy" and putting into reality the infinite potentials of a green and sustainable lifestyle. Through the visit, our students gained green insights and learned how to pursue sustainability in their daily lives.





Ensure access to affordable, reliable, sustainable and modern energy for all

Highly cited
27%

FWCI
2.27

262
Publications

In top
journals
59%

Research

Tin Halide Perovskite Solar Cells: An Emerging Thin-Film Photovoltaic Technology

This highly-cited research paper, co-authored by Dr Alvin Zhou of Department of Physics, discusses the critical challenges for the further development of TPSCs such as oxidation, high background carriers, uncontrollable crystallization, interface recombination, band alignment, and instability. The team also introduces potential directions for the future development of TPSCs including probing the formation mechanisms of tin perovskite, revealing the basic properties of Sn perovskite, overcoming the stability issue of TPSCs, and understanding TPSC device physics and structure engineering.

More information can be found here:
<http://www.doi.org/10.1021/accountsmr.0c00111>.

Dr Alvin Zhou
Department of Physics

Research

Cross-Border Governance and Sustainable Energy Transition: The Case of the Guangdong-Hong Kong-Macao Greater Bay Area

In this review article, Dr Daphne Mah, Associate Professor of Department of Geography, and HKBU research team provides a conceptual framework of the Guangdong-Hong Kong-Macao Greater Bay Area (GBA) as a top-down project of cross-border governance (CBG). It highlights the importance of the building of institutions for achieving effective cross-border governance, and shows that, for the regional energy cooperation of the GBA, while there is a shift towards environmental governance, attention on renewable and low-carbon energy remains weak. Details of study and the three key recommendations that the team subsequently made can be found here: <http://doi.org/10.1007/s40518-021-00178-4>.



Renewable energy makes up less than 1% of the current energy mix in Hong Kong. The government needs to make good use of the solar potential available at over 1,000 primary and secondary schools to avoid wasting natural resources.



Policy Mixes and the Policy Learning Process of Energy Transitions: Insights from the Feed-in Tariff Policy and Urban Community Solar in Hong Kong

Dr Daphne Mah and her research team bring together the key concepts of policy mixes and policy learning to examine how the effectiveness of renewable energy policies can be improved, with reference to a recent feed-in tariff (FiT) policy in Hong Kong focusing on two prospective solar communities. This paper, published in *Energy Policy*, one of the top journals in its field according to Scopus CiteScore, urges that policy makers should give closer attention to policy mixes and advanced forms of policy learning than choosing a single “most effective” policy instrument to unlock the under-used community solar potentials.

More information can be found here:
<http://doi.org/10.1016/j.enpol.2021.112214>.



Dr Daphne Mah
Department of Geography



Promote sustained, inclusive and sustainable economic growth, full and productive employment and decent work for all

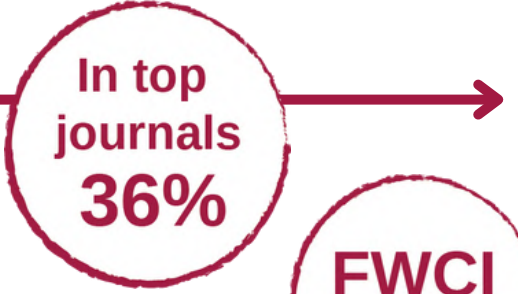


Education

Students at HKBU are learning to promote sustained, inclusive and sustainable economic growth, full and productive employment and decent work for all. Our undergraduate students can gain exposure to various economic knowledge by taking courses related to the principles of economics, entrepreneurship, social innovation, and wellness in an employment environment.

These are some of the courses:

- BUSI2026 Entrepreneurship and Innovative Thinking
- ECON1005 Principles of Economics I
- GTCU2036 Social Innovation and Entrepreneurship
- HRMN3025 Employee Wellness



HKBU Career Centre

HKBU makes every effort to provide employment information and opportunities to our students. Our Career Centre endeavours to facilitate career development and job search of the students, as well as serve as a connection among students, staff and employers.

Career education is a continuous programme that aims to facilitate the career planning of students, enhance their confidence in job hunting, and boost their employability after graduation. Around 3,800 students participated in a wide variety of tailor-made career training activities and programmes such as career exploration workshops, job search skills training and alumni sharing sessions. Individual career counselling and advising services are also provided to cater for the needs of students with different areas of studies and career interests.





Promote sustained, inclusive and sustainable economic growth, full and productive employment and decent work for all

Event

Innovative career planning activities and career fairs are organised regularly for students to take part in and get in touch with their potential employers.



Participants
1330

Skills Empowerment Scheme

The Skills Empowerment Scheme aims to motivate students at HKBU to broaden their scope of knowledge by acquiring practical skills and obtaining internationally-recognised certifications that employers desire the most. Students and graduates can therefore boost their employability and pursue lifelong learning.



Participants
700

SuitSwitcher

Since 2017, SuitSwitcher has been gathering excessive work-wear clothing and passing them on to the students in need. SuitSwitcher aims at helping HKBU students dress professionally and suitably for job interviews and the workplace. It also promotes sustainable consumption on campus.



Research

Student Return Migration from A Processual and Relational Perspective: Analyzing the Returning Experience and Adaptation of Chinese Students in South China

Dr Yinni Peng, Associate Professor of Department of Sociology, received support from the Research Grants Council for this project with a General Research Fund of HK\$0.70M. The study looks at the return of Chinese students from a relational and processual perspective, by means of in-depth interviews and field observations, and aims to enrich the theoretical and empirical discussions of student return migration.



Build resilient infrastructure, promote inclusive and sustainable industrialization and foster innovation



Education

HKBU offers a wide range of courses to stimulate divergent thinking and pioneer innovations among students and across different disciplines. We also encourage students to learn more about STEM education and artificial intelligence.

These are some of the courses:

- COMP3057 Introduction to Artificial Intelligence and Machine Learning
- EDUC1015 Teaching and Learning with Information and Communication Technology (ICT)
- FILM3147 Entertainment 3.0: Creative Industries and Technology
- ITEC1007 Getting Started with Artificial Intelligence

Knowledge Transfer

Sapphire Thin Film Coated Substrate

The HKBU patented invention entitled “Sapphire thin film coated substrate” has been named as one of the top 50 candidates at the 3rd Guangdong-Hong Kong-Macao Greater Bay Area (GBA) High-Value Patent Portfolio Contest 2021. Developed by Professor Cheah Kok-wai, Dr Elizabeth K. S. Law Endowed Professor in Advanced Materials and Chair Professor of the Department of Physics, the special substrate is one of only two candidates from Hong Kong in the top 50.



Professor Cheah Kok Wai
Department of Physics

Facility

Centre for Chinese Herbal Medicine Drug Development

HKBU established the Centre for Chinese Herbal Medicine Drug Development (CDD), a state-of-the-art facility equipped with comprehensive technologies and appliances, to enhance the ability of Hong Kong to conduct research and development of novel Chinese medicine (CM) drugs according to market demands. Our CDD will not only nurture talents for the CM industry but also standardise and internationalise the development of CM drugs.



Professor Bian Zhaoxiang, Director (right), and Dr Lin Chengyuan, Senior Scientific Officer (left)

Facility

The Entrepreneurship and Innovation Centre

Established in 2016, Entrepreneurship and Innovation Centre (EIC) aspires to support entrepreneurship education in the School of Business. To promote entrepreneurship, drive innovation, and nurture creativity among our students, EIC organises seminars, workshops, and related events for students to participate in. The EIC especially plays an important role in organising entrepreneurial activities for BBA (Hons) - Programme Entrepreneurship Concentration (first of its kind in Hong Kong).





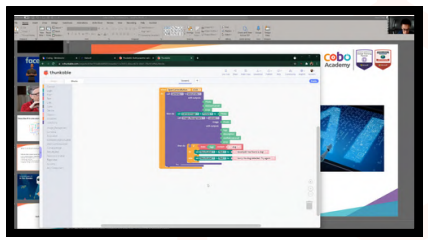
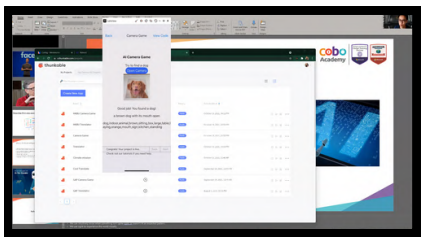
Build resilient infrastructure, promote inclusive and sustainable industrialization and foster innovation

Event

As science, technology, engineering, and mathematics (STEM) knowledge and artificial intelligence skills have emerged as the most in-demand skills in recent years, HKBU offers different opportunities for our students to equip them with relevant skills and knowledge to meet the demand in the market.

Tech Discovery for All Students: Embrace AI & Build Your First Intelligent Mobile App

In this workshop, students were exposed to basic coding and skills in building mobile apps. Using Thinkable, a platform to create mobile applications, students got the opportunity to build a smart Translator App and an AI-based image Recogniser App.



STEM Internship Programmes

The HKBU STEM Internship Scheme is launched with the help of the Innovation and Technology Fund. The purpose of the scheme is to encourage STEM students to gain working experience in the field of innovation and technology, film, data and media, creative and health to boost their interest in pursuing a career.

Knowledge Transfer

Innovative Product Design for China Space Explorations

Ms Anna Qin, Assistant Professor in the Academy of Visual Arts, recently collaborated with the Shenzhen ND Industrial Design and the Astronaut Centre of China to design and develop a portable ergonomic landing chair for astronauts. The Landing Chair provides immediate support to the astronauts' musculoskeletal system deterioration conditions during venue transfer. Ms Qin was the chief designer of the first generation Landing Chair for spacecraft Shenzhou-10 and is now in charge of the optimisation of the third generation (for Shenzhou-13). From ergonomics, materials and engineering, and aesthetics, Ms Qin devotes herself to enhancing the overall experience from both the users' and audiences' perspectives.



Ms Anna Qin
Academy of Visual Arts





Reduce inequality within and among countries

Student Support

Upholding the principle of equal opportunity for all, HKBU provides equal educational opportunity to every student and appropriate arrangements for students who encounter impairments, disabilities, and other difficulties in learning.

First-Generation University Student Fund

First-generation university students are students whose parents have not received tertiary education. With donors' generous support, HKBU established the "First-Generation University Student Fund" to provide financial assistance for students. Successful applicants will receive up to \$15,000 for expanding their participation in out-of-classroom activities, which benefit their whole personal development and future career exploration. The Fund has received HK\$10 million and benefitted more than 1,500 students since its inception in 2017.

Do you know??

More than **70%** of our students are first-generation university students!

In top journals **32%**

111 Publications

FWCI 1.22

Research

Health Differences among South Asian and Chinese Older Adults in Hong Kong: The role of Social Capital

Professor Daniel Lai, Chair Professor of Social Work and Dean of Social Sciences, was awarded a General Research fund of HK\$0.9M by the Research Grants Council for this project. In this study, Prof Lai and his team seek to identify differences in health and wellbeing and social capital within and between South Asian and Chinese older adult populations using a hypothesized conceptual framework that outlines the associations between ethnic minority status, social capital and health and wellbeing along psychosocial and material pathways. It will lay the foundation for future research with larger samples of older ethnic minority groups in Hong Kong, building a knowledge base for the development of culturally sensitive and equitable community health and social care strategies and services.

Accessibility

Adhering to the Statutory Regulations for "Buildings to be planned for use by disabled persons", changes have been made and will continue to be made in this regard to increase accessibility and safety on our campus. Some of the barrier-free facilities on campus are listed below:

- Emergency call alarms are installed in disabled toilets.
- Ramps, railings and tactile guide paths are installed on campus.
- Lifts designated for the disabled are installed with braille and tactile markings on the lift control panels and equipped with a voice announcement function.
- Most of the escalators are equipped with audible warning signals to help the visually impaired identify the running direction of the escalators.
- Wheelchair lifting machines are installed.



HKBU also welcomes licensed guide dogs to access the campus for the purpose of assisting the needy students.



Reduce inequality within and among countries

Education

The Bachelor of Social Work (Hons) was established in the 1990s and has been a long-standing undergraduate programme which provides students with the knowledge, skills, and professional values to fulfil their needs to become social workers. Upon graduation, students can register as certified social workers with the Social Workers Registration Board in Hong Kong. HKBU vows to continuously cultivate social worker talents to identify people in need of assistance and safeguard their welfare.



The Bachelor of Social Sciences (Honours) in Sociology places strong emphasis on sociological theories and research methodology. The programme also puts emphasis on the social development and organisations in both Hong Kong and mainland China to enhance the understanding of continuities and changes at the local, regional and global levels.

Event

SEN training for students

HKBU students learned how to engage students with special education needs (SEN) more effectively in inclusive learning and to increase understanding of inclusion. Other areas included mental health wellbeing, campus accessibility, and learning-related adaptations for SENs.

Significant events such as the Mental Health First Aid Standard Course, the Stargaze Camp For All And The Blind, a special educational needs exchange tour, seminars on web/mobile app accessibility were organised.



Outreach

Early Morning Online Event with Hong Chi Students

HKBU students were invited by "Early Morning", a social innovation student group, to join a social inclusion event with students from Hong Chi Morninghope School (Tuen Mun). Students had the opportunities to interact with children with intellectual disabilities through playing games on ZOOM. Participants reflected on how to enhance social welfare to empower people in need.





Make cities and human settlements inclusive, safe, resilient and sustainable

Education

Making a city inclusive, safe, resilient and sustainable involves joint efforts of many stakeholders, including the government, the private sector, and other actors. Individuals also play a key role in creating a sustainable city and community by raising their self-awareness. HKBU offers multiple General Education (GE) courses to boost students' awareness and understanding of the interaction between humans and the environment. Moreover, we aim to develop and build a sustainable urban environment together with our students and stakeholders in the community.

These are some of the courses:

- GCAP3196 Building Sustainable Cities (Interdisciplinary Independent Study)
- GCAP3215 Art and the Community
- GTSU2047 Walkability of a City
- GTSU2056 People and the Environment



In top journals
54%

175
Publications

FWCI
1.78

Research

HKBU researchers put joint effort into building a safe and resilient city. Dr Gao Meng, Associate Professor of the Department of Geography, was given the Atmospheric Sciences Division Outstanding Early Career Scientist Award (2020) and The Global Atmosphere Watch (GAW) Early Career Travel Grants (2018). Research conducted by Dr Meng focused on the connections between air pollution and health and climate in highly polluted areas such as China and India.

Assimilating Surface PM2.5 and Ozone Measurements to Improve Health Exposure Assessment and Air Quality Forecasting in South China

The study examines in-depth chemical and physical processes causing severe particulate matter and ozone pollution in Asia using a coupled meteorology-chemistry model. It demonstrates how the incorporation of PM2.5 during winter haze periods can enhance model predictions, and how these enhanced predictions can dramatically lower the uncertainty in estimates of the effects of aerosols on human health. The research also discovered that it is possible to estimate the conditions of the ocean temperature in autumn to predict the severity of the Indian winter haze, which has important implications for pollution prevention at least a season in advance.



Air pollution is like a discipline of its own, and there are many issues to be addressed. Our research outcomes can provide a better understanding of the problem and make a real impact through helping countries develop effective solutions.

Dr Gao Meng
Department of Geography





Make cities and human settlements inclusive, safe, resilient and sustainable

Event

Green and Health Mindfulness Workshop: Kowloon Park quest

Hong Kong is known for being a concrete jungle, but there are actually many country parks and nature reserves that can subvert one's original impression of Hong Kong. Under the guidance of Green Questers, our students explored Hong Kong's urban nature from a new point of view and raised their awareness of urban sustainability.



Event

Webinar: Aesthetic Wellness Workshop - Countryside Conservation X City

Speakers from the Hong Kong Architecture Centre shared their insights and experiences in unique parts of Hong Kong with students at HKBU. With a better understanding of the speakers' experiences in learning in a remote village and the challenges of promenade development projects in different areas of Hong Kong, our students were encouraged to appreciate and explore the other side of Hong Kong's countryside.

Event

Webinar: Aesthetic Wellness Workshop - Aesthetic Values of the Future Cities - from Urban Planning and Design Perspectives

In this webinar, registered professional town planner Mr Jeffrey Wong shared with our staff and students the key aesthetic values of future Hong Kong from urban planning, design perspectives and discussion on the possible ways to achieve them. It was also an opportunity for participants to revisit the urban planning and design strategies and spatial development directions beyond 2030.



Ensure sustainable consumption and production patterns

Education

HKBU pays special attention to promoting the concept of responsible consumption and production. We believe that we can raise students' awareness through education. Our General Education programme, the Department of Communication Studies and the Department of Marketing have provided various courses to achieve this particular goal.

These are some of the courses:

- BUSI3006 Business Ethics and Corporate Social Responsibility
- GFVM1056 Evil Business? Psychology, Politics and Philosophy of Business Ethics
- GTSU2037 Sustainability through Digitalization: Active and Responsible Citizens in the Digital World
- GTSU2057 Sustainable Design Thinking
- PRAD3047 Corporate Social Responsibility and Stakeholder Engagement

In top journals
57%

FWCI
1.77

119
Publications

Highly cited
24%

Event

Design Thinking Workshop - Reducing Food Waste in Hong Kong

Food waste has been a serious issue that constitutes the largest municipal solid waste in Hong Kong. HKBU held a food waste workshop to introduce to our students the seriousness of the food waste issue as well as the challenges faced by existing reduction campaigns. As global citizens, our students also contributed to the cause by brainstorming new ideas with easy-to-use design-thinking tools and creating solutions for waste reduction.



Event

Mil Mill Tour: The Next Station of Recyclables

As a subsequent event of a previous sharing session by Mr Harold Yip, the founder of Mil Mill, HKBU offered a field trip for our students to visit the first pulp mill that recycles and pulps beverage cartons in Hong Kong in person. During the visit, students learned more about how beverage cartons were recycled into toilet rolls. They also joined an upcycling paper-making workshop and practised circular economy from recycling to reproduction.





Ensure sustainable consumption and production patterns

Outreach

Jockey Club Responsible Consumption Programme

Supported by The Hong Kong Jockey Club Charities Trust with a donation of over HK\$8 million, the Department of Marketing of HKBU's School of Business offers a three-year environmental educational programme, Jockey Club Responsible Consumption Programme. The programme aims to raise the awareness of responsible consumption in Hong Kong and among the youth, and educate and engage the youth in responsible consumption behaviours. The programme is divided into three parts: a secondary school marketing contest, a public education TV programme and a research project. As a three-year environmental educational community programme, it focuses on three designated annual themes, "Ugly Food" (2018), "Shopping Bags and Packaging" (2019) and "Fast Fashion" (2020).

Jockey Club Responsible Consumption Programme 賽馬會責任消「廢」計劃



Research

A Critical Review on Various Feedstocks as Sustainable Substrates for Biosurfactants Production: A Way towards Cleaner Production

This research paper, co-authored by Professor Jonathan Wong of Department of Biology, is among the world's top 1% most cited publications according to Scopus. It includes state-of-the-art information about employing municipal solid waste as a sustainable feedstock for biosurfactant production, which has not been simultaneously covered in many published literatures on biosurfactant production from different feedstocks. It also addresses the myriad of other issues associated with the processing of biosurfactants, as well as the methods used to address these issues and perspectives, which will move society towards cleaner production.

The paper was published in *Microbial Cell Factories* in 2021. More information can be found here: <https://doi.org/10.1186/s12934-021-01613-3>.

Facility

Sustainability Gallery

S Gallery is one of the key public education projects of "Institute of Bioresource and Agriculture" (IBA). Supplement with an interesting spaceship astronaut training story, S Gallery is furnished with advanced multimedia technologies (e.g. 4D, AR) to showcase exhibitions of biological resources, organic agriculture and sustainable living, which allows visitors to gain knowledge by an interactive approach. Visitors are encouraged to reflect on the problems of contemporary lifestyle and live sustainability.





Take urgent action to combat climate change and its impacts

Research

Temporal Evolution of Sub-daily Precipitation Extremes in Hong Kong: Dependency on Temperature and Implications to Flash Floods

Due to the lack of high-quality intraday-scale precipitation data of sufficient time length and spatial range, the understanding of intraday-scale extreme precipitation and the response of flash floods to temperature rise is still limited. Based on the precipitation records of Hong Kong, Dr Li Jianfeng worked with other researchers to study the temporal evolution of the intensity, duration and total amount of intraday-scale extreme precipitation events and their relationship with temperature. This topic will help improve people's understanding of intra-day scale extreme precipitation changes under climate warming and its potential impact on flash floods. The results of this research will have practical implications for Hong Kong and other cities to enhance their resilience to climate change, especially in flood control management.



This knowledge can help us evaluate the risks of water changing and environmental hazards, and enhance the climate readiness of our cities and regions.

Dr Li Jianfeng



Focusing on the responses of hydrological cycles and climate extremes under the changing environment, Dr Li's research helps advance scientific understanding of the hydro-meteorological mechanisms under climate change and evaluate future risks of water and environmental hazards. His publications have been cited for more than 1100 times with a high impact factor. He was given the President's Award for Outstanding Performance as Young Researcher in 2019 based on his outstanding academic contribution.

Dr Li Jianfeng

Department of Geography

Event

Youth Delegates of the 27th United Nations Climate Change Conference

Several youth delegates of The 27th United Nations Climate Change Conference (COP27) held three "Youth Dialogue on Climate Change" sessions at CUHK, HKU, and HKBU in succession. The objectives of the events were to build new platforms for local youth to discuss climate change and to ensure that youth's role in climate action was highlighted, inspired, and recognised across Hong Kong and even across the globe. This event provided HKBU students a great opportunity to voice out their thoughts and take part in such a pertinent issue.



Event

Climate Education Kick-off

The Office of Student Affairs at HKBU organised a workshop to help students understand the difficulties of climate change. By playing tabletop games, students' understanding and awareness could be enhanced while unifying education for a foothold in climate action.



Take urgent action to combat climate change and its impacts

Facility
Green Spaces

Green spaces help the environment by bringing down city temperatures and filtering dust and pollutants from the air. HKBU has planted and constructed green roofs, terraces, and other green places to improve the green spaces on campus.

107 Publications

In top journals 53%

FWCI 1.67

Highly cited 24%



Herbs Corner at The Wing Lung Bank Building for Business Studies (4/F)



Green Roof at Oen Hall Building (Main Building) (12/F)



Green Wall at Academic and Administration Building Podium (3/F)



Floral Garden at Academic and Administration Building (10/F)



Sculpture Garden at Communication and Visual Arts Building

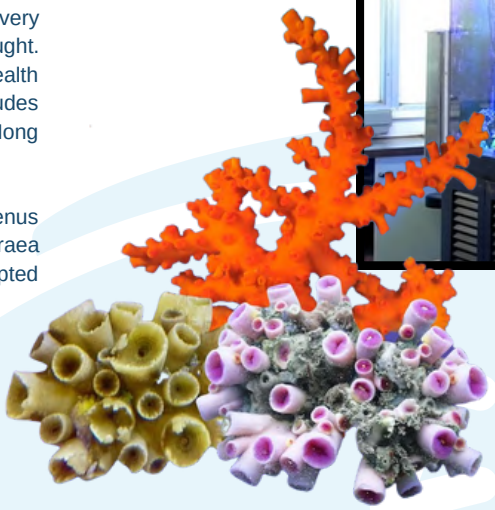
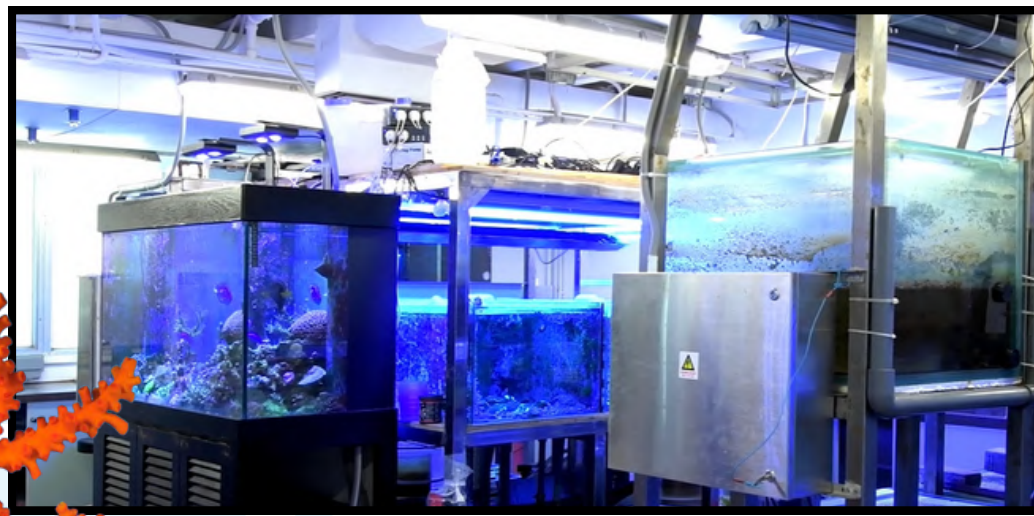
Conserve and sustainably use the oceans, seas and marine resources for sustainable development

Research

Discovery of Three New Coral Species in Hong Kong Waters

Hong Kong's waters are frequently criticised for being polluted, but a recent discovery from HKBU biologists suggests that our seas are not as bad as we first thought. Professor Qiu Jianwen and his team have been working on a series of coral health research projects in Hong Kong for 8 years, and their scope of the research includes coral bleaching caused by global warming, coral diversity, and coral predators in Hong Kong seas.

They have successfully discovered 3 new sun coral species belonging to the genus Tubastraea, namely Tubastraea dendroida, Tubastraea chloromura and Tubastraea violacea. As a result of the remarkable discovery, the study project has been accepted for publication in the academic journal *Zoological Studies*.



The discovery is very encouraging as it provides strong evidence of the high marine biodiversity in Hong Kong waters, and it helps fill in the knowledge gaps in biodiversity as advocated in the Government's Biodiversity Strategy and Action Plan.

Professor Qiu Jianwen




FWCI
1.56

In top journals
55%

74
Publications

Professor Qiu Jianwen
Department of Biology



 Conserve and sustainably use the oceans, seas and marine resources for sustainable development

Research

Unlock the Genomic Secrets of Organisms that Thrive in Extreme Deep-sea Environments

A study led by scientists at HKBU has decoded the genomes of the deep-sea clam (*Archivesica marissinica*) and the chemoautotrophic bacteria (*Candidatus Vesicomysocius marissinica*) that live in its gill epithelium cells. Through analysis of their genomic structures and profiling of their gene expression patterns, the research team revealed that symbiosis between the two partners enables the clams to thrive in extreme deep-sea environments. The research findings have been published in the academic journal *Molecular Biology and Evolution*.



Event

Kayak for Marine Service

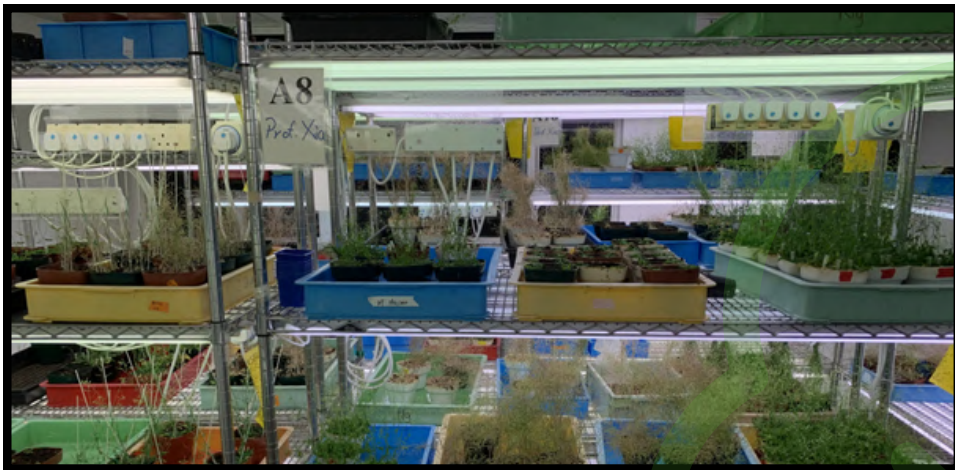
Plastic, bottles, disposable containers, and even furniture. There is no denying that garbage islands floating could be easily found in Hong Kong's water. To fight against serious marine pollution, Kayak for Marine Service provided three continuous training sessions for our students to equip them with beginning levels of kayaking skills and techniques. After having some basic understanding, students were assigned to collect rubbish on Sharp Island and Yim Tin Tsai in Sai Kung. Also, our students worked hard to promote the importance of environmental protection on campus. Exhibition and game booths were set up to help fellow students understand the hazardous impact of human activities on marine species.





Protect, restore and promote sustainable use of terrestrial ecosystems, sustainably manage forests, combat desertification, and halt and reverse land degradation and halt biodiversity loss

Education



HKBU is dedicated to providing students with comprehensive training in biological sciences with specialities in biotechnology and environmental sciences. The BSc (Hons) in Applied Biology (Environmental Science Concentration) programme has been accredited by the Hong Kong Institute of Qualified Environmental Professionals Limited (HKIQEP) under the HKIQEP Accreditation Scheme for Environmental Degree Programmes – Undergraduate Level. Students will learn practical skills for research and applications to address current and topical environmental and human health-related issues and challenges.

These are some of the courses under the concentration:

- BIOL2015 Biodiversity
- BIOL2045 Natural Resources and Environment
- BIOL3025 Plant Physiology
- BIOL4016 Principles of Environmental Management

Research

Molecular Mechanisms for LOT1 Regulation of Plant Drought Stress Tolerance

Professor Liming Xiong of Department of Biology conducts large-scale genetic screens using an improved infrared imaging method to isolate mutants in Arabidopsis with altered transpiration patterns to identify genes that control transpiration. Not only will it uncover novel mechanisms of stress and hormonal signaling in plants, but will also have immediate implications for breeding and bioengineering drought-tolerant crop plants.

This project is supported by a HK\$1.19M General Research Fund by the Research Grants Council.

Do you know??

This is the only undergraduate programme in Hong Kong accredited in five areas (Environmental Science, Environmental Management, Environmental Impact Assessment and Health Impact Assessment, Waste and Water).

FWCI
1.36

61
Publications

In top
journals
46%





Protect, restore and promote sustainable use of terrestrial ecosystems, sustainably manage forests, combat desertification, and halt and reverse land degradation and halt biodiversity loss

Event

Farm Tour: Is Beekeeping Possible in the City? - Beetales

Bees play a key role in ecosystems as they are essential for plant reproduction. Beetales, a local beekeeping organisation based in Sun Hing Farm, aims to promote honey bees and ecological conservation through urban beekeeping. During the tour, students closely interacted with bees to learn about ecology, urban beekeeping, farming system, and the relationship between humans and bees in Sun Hing Farm. Our students also got the chance to make their own honey lip balm using honey produced by the bees of Sun Hing Farm.



香港城市大學
CityU Hong Kong

Social Innovation Inspiration Tour Series
社會創新靈感遊系列

Farm Tour: Is beekeeping possible in the city? - Beetales
農場遊：在城市養蜂可行嗎？

Introduction of the farming system
介紹新興農場耕作模式

Honey lip balm workshop
蜂蜜潤唇膏工作坊

Introduction of beekeeping + getting up close and personal with bees
養蜂講解及親身接觸蜜蜂

Beetales, a local beekeeping organisation based in Sun Hing Farm, aims to promote honey bees and ecological conservation through urban beekeeping.

15/June
(Wed)

Visiting Time: 2:30pm - 5:30pm
Departure Time: 1:30pm at HKBU
Location: Sun Hing Farm
Transportation: Shuttle Bus (HKBU (-) Sun Hing Farm)
Quota: 20

ALL HKBU STUDENTS ARE WELCOME!
*This tour is CGL-recognised.

Facility

Institute of Bioresource and Agriculture

The Hongkong and Shanghai Banking Corporation Limited 150th Anniversary Charity Programme donated HK\$37M for the construction of the Institute of Bioresource and Agriculture (IBA) inside the Faculty of Science in 2017. IBA aims to operate as a professional forum for promoting the agricultural sector, protecting biodiversity and bioresources, and fostering public awareness of sustainable living practices in the neighbourhood.





Promote peaceful and inclusive societies for sustainable development, provide access to justice for all and build effective, accountable and inclusive institutions at all levels

Facility

HKBU Fact Check



To tackle the ever-growing trend of misinformation and fake news, the School of Communication and Film has set up and independently operated “HKBU Fact Check”. It is the first fact-check service operated by an independent academic institution in Hong Kong. Our fact-checkers have received comprehensive training to act under the code of principles of fact-checking and are required to pass three rounds of fact-checking tests, as well as to sign the Declaration of Interest Form before performing any fact-checking. HKBU strives to pursue the truth, uphold journalistic professionalism, and reduce the level of misinformation in mass media.



If fear is triggered, without guidance and encouragement at the first step of the vaccination process, fear arousal will backfire and may have unintended effects.

Dr Xinzhi Zhang



Event

Have You Fact Checked Today?

A fact-checking seminar was organised by Mr Raymond Li, Co-Director of “HKBU Fact Check”. The seminar focused on sharing techniques needed for fact checking and reminding our students to question the validity of information. Living in an age of information explosion, it is important for our students to learn to distinguish right from wrong and be a wise netizen.



Research

Examining COVID-19 Vaccination Misinformation and Clarification by the Public Sector in Hong Kong

In light of the widespread COVID-19 vaccine concerns in Hong Kong, Dr Xinzhi Zhang and other researchers conducted a one-year research on this topic. They researched the frequency and nature of the delivery channels used to share COVID-19 vaccine misinformation messages in Hong Kong to address public concerns and hesitancy toward vaccination. His team also offered suggestions on improving the quality of vaccine misinformation clarification messages for the public in the hope of boosting the COVID-19 vaccination rate for the good of the community.

Dr Zhang's research focuses on comparative political communication, digital journalism, health communication, and digital humanities. He was also awarded a research grant from the Public Policy Research Funding Scheme (PPR) from the Policy Innovation and Coordination Office (PICO) of the Hong Kong Government.

Dr Xinzhi Zhang

Department of Interactive Media





Promote peaceful and inclusive societies for sustainable development, provide access to justice for all and build effective, accountable and inclusive institutions at all levels

Research

Partisan Bias of Perceived Incivility and its Political Consequences: Evidence from Survey Experiments in Hong Kong

To understand how political biases were produced in Hong Kong, Dr Xinzhi Zhang engaged in a research project titled "Partisan Bias of Perceived Incivility and its Political Consequences: Evidence from Survey Experiments in Hong Kong". The research team aimed to examine the emergence and consequences of perceived incivility in disagreement comments under the exposure to presumably uncivil content in society. Raising awareness of uncivil content and behaviours can help citizens to comply with netiquette and further promote a harmonious society.

More information can be found here: <https://doi.org/10.1093/joc/jgab008>.

The Legacies of Political Violence: How do Violence in Protests Shape Citizen Attitudes in Hong Kong?

Dr Samson Yuen, Associate Professor of Department of Government and International Studies, examines in his project how and why citizens' exposure to state violence and their perception of protesters' violence during the protests influence their trust, tolerance, civic participation, mental well-being and attitudes towards political violence. This study, a first of its kind in Hong Kong, combines various methodological approaches, including large-n population surveys, panel surveys and focus group interviews, to produce rich and original evidence to unveil the enduring significance of protest-related violence. It aims to advance the comparative study of modern-day protests, inform policymakers on public sentiments and provide insights to facilitate reconciliation after political upheavals.

This project is supported by a HK\$0.62M General Research Fund by the Research Grants Council.

Education



With a focus on international relations and comparative politics, the Department of Government and International Studies offers two undergraduate programmes with the aim to train students to different aspects of political science:

- Bachelor of Social Sciences (Hons) in Government and International Studies
- Bachelor of Social Sciences (Hons) in European Studies

The BSocSc (Hons) in Government and International Studies seeks to sharpen the student's awareness by incorporating a systematic, comparative and international dimension while the BSocSc (Hons) in European Studies another study programme focuses specifically in Europe, combining the study of European political, social, and cultural affairs with intensive foreign language acquisition.

In top journals
45%

91
Publications

FWCI
1.36



Strengthen the means of implementation and revitalize the Global Partnership for Sustainable Development

Outreach

Building Resilient Universities for Tomorrow

The QS APPLE 2021 Conference hosted by HKBU was held virtually with the theme “Future Rebalance: Emerging trends and workforce in the Asia Pacific”. The conference features more than 80 distinguished speakers from world-leading universities and organisations. It highlights the strategic direction of transdisciplinary education and that research is fundamental to the development of higher education in the Asia-Pacific region, therefore universities need to become more resilient to cope with technological advancements and uncertainties in the post-pandemic era.



Outreach

Global Virtual Hackathon 2021

In collaboration with West Virginia University, Ritsumeikan University and the National Cheng Kung University, we hosted the Global Virtual Hackathon 2021 that aimed to address the sustainability of the “new normal” under the COVID-19 pandemic. The competition brought together around 90 university students from 16 countries and cities who then devised innovative plans and creative solutions to address the SDGs in 48 hours.



Outreach

Next-Generation Art Technologies Forum

The forum brought together experts from industry, academia and government to discuss the fusion of science, technology and art, and the opportunities opened up by the new era of Art Tech. It was co-organised by HKBU, the Cameron Pace Group – China (a 3D technology and production company led by renowned movie director James Cameron), École Polytechnique Fédérale de Lausanne (EPFL) and City University of Hong Kong (CityU).



Outreach

Global and Local Partnerships

HKBU collaborates with global and local partners to equip our business students with the knowledge and skills they need to deliver changes for tomorrow. As a matter of fact, we are the first university in Hong Kong admitted to the UN-supported Principles for Responsible Management Education (PRME). Moreover, our School of Business co-founded the World Business Ethics Forum (WBEF) with the University of Macau.





Strengthen the means of implementation and revitalize the Global Partnership for Sustainable Development

Research

International Conference on Sustainable Biowaste Management 2021

The SBM 2021 has provided a vibrant interactive platform to exchange views, visions, and experiences on bio-technology, bio-fertilizers and bio-products, and climate change abatements related to biowaste management. The conference aims to benefit Hong Kong, Asia-Pacific partners and Western countries through knowledge exchange, fostering of collaborations and development of appropriate waste management technologies.

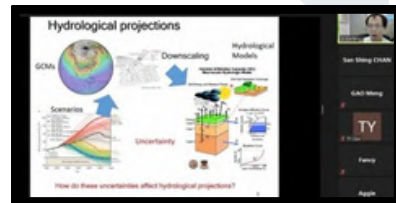


More information can be found here:
<https://sbm2020.hkbu.edu.hk/about-the-conference>.

Research

Geo-Information in Smart Societies and Environment

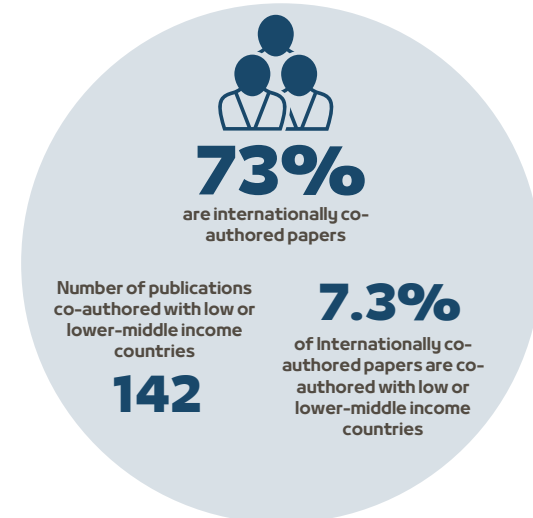
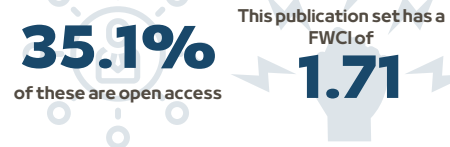
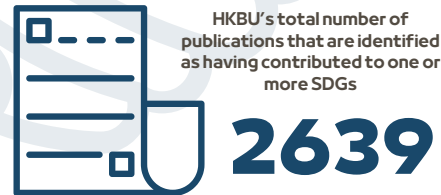
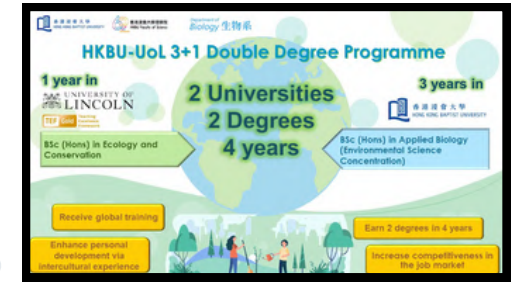
HKBU's Centre for Geo-computation Studies and the Department of Geography hosted a series of webinars with the theme "Geo-Information in Smart Societies and Environment". The series explored the role of geo-information in the investigation of scientific questions in urbanised areas and the natural environment, as well as in the development and implementation of the concept of smart cities and the environment.



Co-organised with two academic journals, Remote Sensing and International Journal of Geo-Information, the webinars were broadcast live on online platforms, with more than 45,000 participants from different countries and regions, including Australia, mainland China, Singapore, Switzerland and the US, attending the talks.

Education

Bachelor of Science (Hons) in Applied Biology (HKBU) and Bachelor of Science (Hons) in Ecology and Conservation (UoL) is a double degree programme jointly offered by HKBU and the University of Lincoln, UK. Students will study at HKBU for the first three years to gain fundamental and advanced knowledge and skills in environmental science and management to address current and topical environmental and human health-related issues and problems, and study Year 4 at the University of Lincoln in its Ecology and Conservation programme.



SUSTAINABLE DEVELOPMENT GOALS





Hong Kong Baptist University
Kowloon Tong
Hong Kong

The HKBU SDG Report 2021 is a student-led project, written and designed by Chung Wai Ha Kate, Fung Yan Yan Conchita, and Li Yee Yung. The three student editors were under the supervision of the Centre for Innovative Service-Learning.

